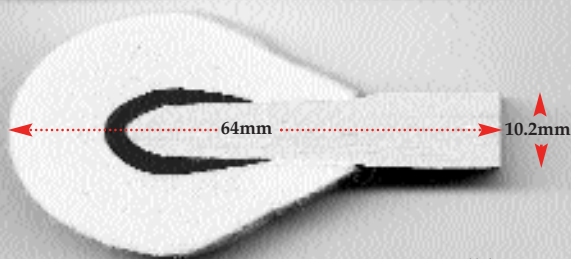


UPRIGHT HAMMERS

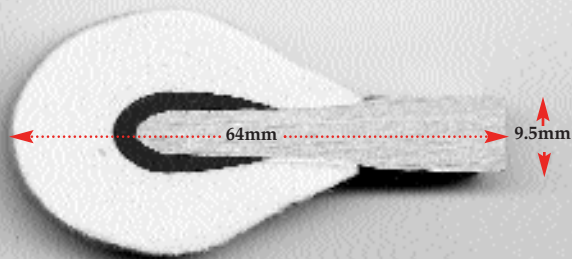
IMADEGAWA UPRIGHT HAMMERS

Performance and economy. Manufactured by Imadegawa & Co., LTD, Japan, these hammers have been the preferred choice for piano technicians nationwide. Pianotek Supply Company first introduced Imadegawa hammers with Nippon felt in 1981 and 20 years later, technicians continue to rely on their quality and dependability. **SPECIFICATIONS:** 15-lb. medium hardness, red underfelt, stapled to #88, factory pre-filed, no chemical hardeners or additives, and available in hornbeam or mahogany mouldings. Pictured below, exact size. Available unbored, factory pre-bored (see chart below), or custom bored to your samples. See page A-1 for ordering and custom boring instructions.

#UW Standard Hornbeam moulding.



#UWT "Thin" Hornbeam moulding.



All hammers shown exact size.
See page A-1 for ordering and
custom boring instructions.

#UWM Standard Mahogany moulding.



IMADEGAWA FACTORY-BORE UPRIGHT HAMMERS

The following hammers represent the most commonly found factory bored upright hammers. All hammers below are pre-bored using Imadegawa #UW 10.2/9.5 (pictured above). Please include part numbers when ordering.

PART#	TREBLE BORE	BASS BORE	RAKE ANGLE	TREBLE ANGLE	BASS ANGLE
#UW/PB1	2-1/2"	2-3/16"	3°	#29=10° #58=0°	18°
#UW/PB2	2-1/2"	2-3/16"	3°	Straight (0°)	18°
#UW/PB3	2-1/2"	2-3/16"	3°	#29=16° #58=0°	18°
#UW/PB4	2-1/2"	2-3/16"	0°	#29=10° #58=0°	18°
#UW/PB5	2-7/16"	2-1/8"	3°	#29=10° #59=0°	18°
#UW/PB6	2-3/8"	2-1/16"	3°	#29=10° #58=0°	18°
#UW/PB7	2-7/16"	2-1/8"	0°	#29=10° #58=0°	18°
#UW/PB8	2-7/16"	2-1/8"	3°	Straight (0°)	18°
#UW/PB9	2-9/16"	2-1/4"	3°	#29=10° #58=0°	18°

TIPS ON ORDERING UPRIGHT HAMMERS

Upright hammers can be ordered unbored, custom bored to your samples, or factory pre-bored. If ordering custom bored hammers, please refer to page A-1 for instructions. For factory pre-bored hammers, the chart at the right represents the most common upright specifications for both new and older "name brand" uprights. Factory pre-bore hammers allow you the convenience of stocking up for jobs without any down time while sending samples for custom boring.

Custom boring available. See page A-1.

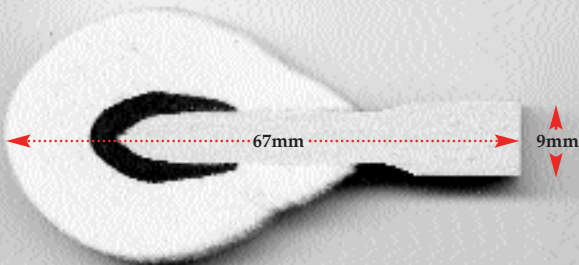
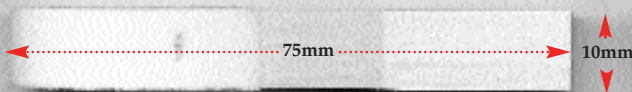
UPRIGHT HAMMERS

ABEL UPRIGHT HAMMERS

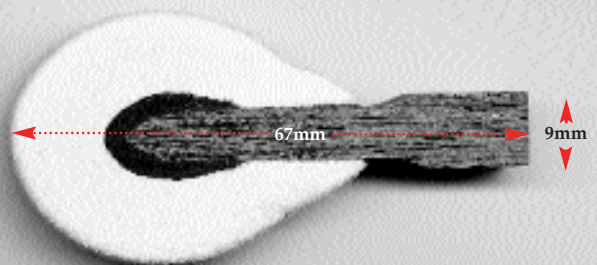
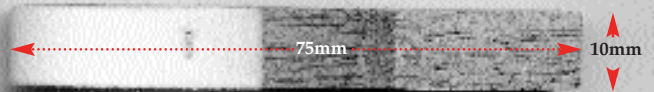
Like Abel grand hammers, Abel uprights are found on some of the world's finest upright pianos, such as Bechstein, Blüthner, Bösendorfer, and others. Manufactured by Helmut Abel, GmbH, Germany, Abel uprights boast clear, large, round tone. These hammers are virtually "finished" and most technicians report very little or no work after installation.

SPECIFICATIONS: 15-lb. medium hardness, factory pre-filed, stapled up to #88, hornbeam or mahogany mouldings, factory pre-filed and contain no chemical hardeners. Pictured below, exact size. Available unbored or custom bored to your samples or specifications. See page A-1 for ordering and custom boring instructions.

#UA Abel Upright w/Hornbeam moulding
"Short" version (63/72mm) also available.



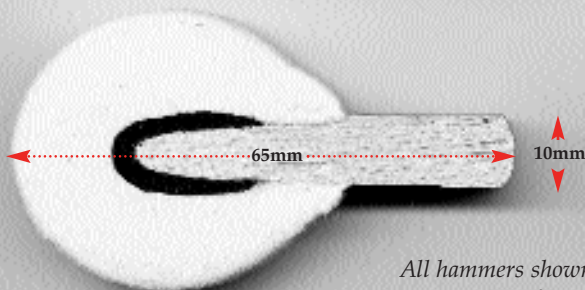
#UAM Abel Upright w/Mahogany moulding



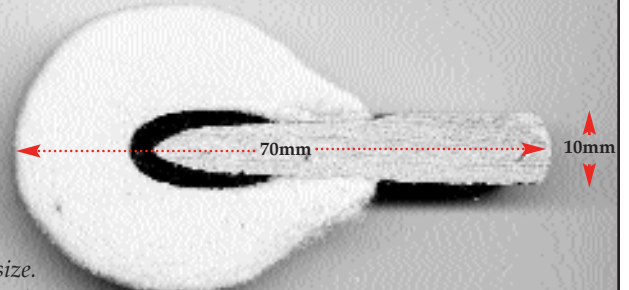
RONSEN UPRIGHT HAMMERS

Traditional "cold-pressed" upright hammers from Ronsen Piano Hammer Co., New York. Low heat pressing produces tone qualities similar to American hammers produced in the 1920's and 1930's. **SPECIFICATIONS:** Medium 14-lb. or 16-lb. for larger uprights, maple mouldings, stapled from #1 to mid #60's, and contain no chemical hardeners. Ronsen hammers may require "voicing up" to achieve desired tone. Pictured below, exact size. Available bored or unbored. See page A-1 for ordering and custom boring instructions.

#UR-14 Ronsen Upright w/Maple moulding



#UR-16 Ronsen Upright w/Maple moulding



All hammers shown exact size.
See page A-1 for ordering and
custom boring instructions.