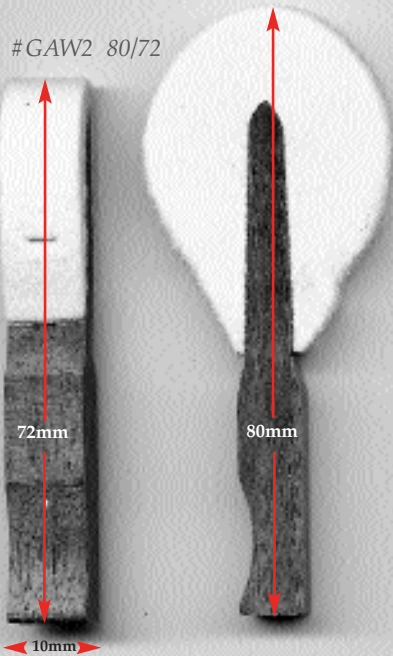


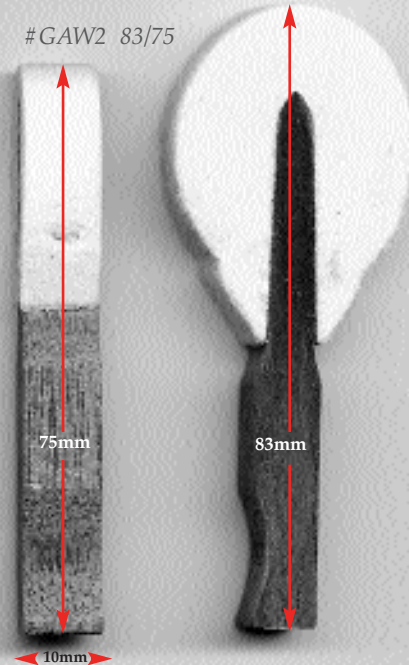
# GRAND HAMMERS

## ABEL "LITE" SERIES

Our best-selling Abel Lite hammer, manufactured by Helmut Abel GmbH, Germany, is the perfect choice for older, small grands. Weight, size, and tone production match most smaller grands. Most technicians report little or no work after installation and very satisfied customers. **SPECIFICATIONS:** 13-lb., factory pre-filed, coved, stapled to #88, no underfelt, and walnut mouldings. Widths are 10mm. Available bored or unbored. See page A-1 for ordering and custom boring instructions.

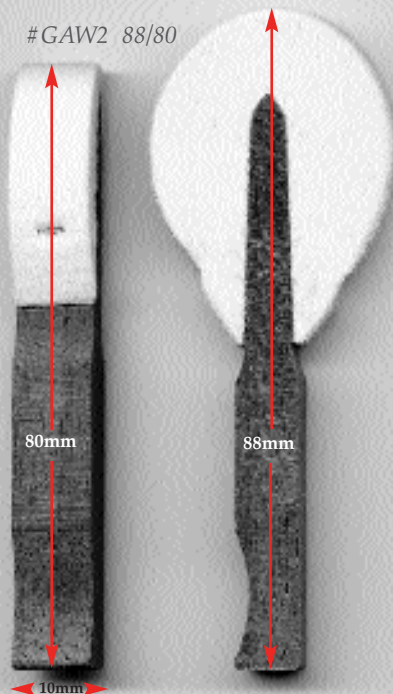


**ABEL "SHORT" BORE**  
"Short bore" Abel Lite fits Knabe, Chickering, Aeolian and many other early American brands. Walnut moulding. Shown left, exact size.  
#GAW2 80/72

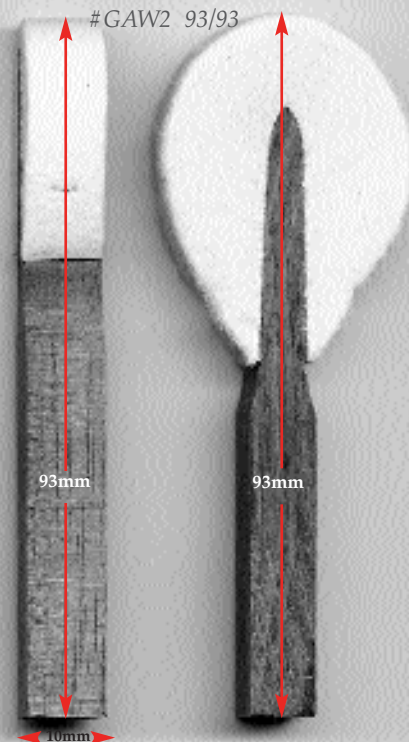


**ABEL "MEDIUM" BORE**  
"Medium bore" Abel Lite fits Mason & Hamlin, Baldwin, Yamaha, Kawai, and most similar bores. Walnut moulding. Shown right, exact size.  
#GAW2 83/75

All hammers shown exact size. Available bored or unbored. See page A-1 for ordering and custom boring instructions.



**ABEL "LONG" BORE**  
"Long bore" Abel Lite fits longer treble bores up to 2 $\frac{1}{2}$ " with 1" tail. Walnut moulding. Shown left, exact size.  
#GAW2 88/80



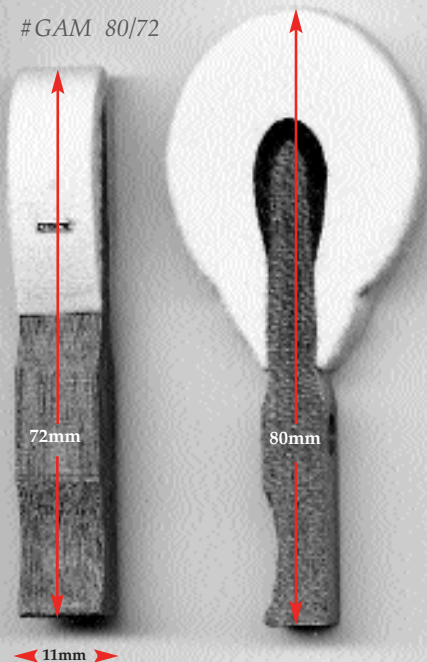
**ABEL "EXTRA LONG"**  
Uncut and uncovered 93mm Abel Lite allows for virtually any bore length. Great for McPhail, Sohmer, and other extreme bore lengths. Perfect for the technician who prefers doing their own boring and custom tail work. Shown right, exact size.  
#GAW2 93/93

# GRAND HAMMERS

## ABEL "STANDARD" SERIES

Proven performance and superior tone production. Abel Standard hammers, manufactured by Helmut Abel, GmbH, Germany, are the technicians choice for high quality pianos. Our best selling replacement hammer for large grands including Steinway, Mason & Hamlin, Baldwin, Yamaha, Kawai, and others. **SPECIFICATIONS:** 15 lb, factory pre-filed, coved, stapled to #88, purple underfelt, no chemical hardeners or additives, and available in mahogany or hornbeam mouldings. Available unbored or, custom bored to your samples or specifications. See page A-1 for ordering and custom boring instructions.

#GAM 80/72



### ABEL "SHORT" BORE

The perfect choice for Steinway and other "short bores". Allows up to 1 1/2" treble bore length with 1" tail. Mahogany moulding. *Shown left, actual size.*

#GAM 80/72

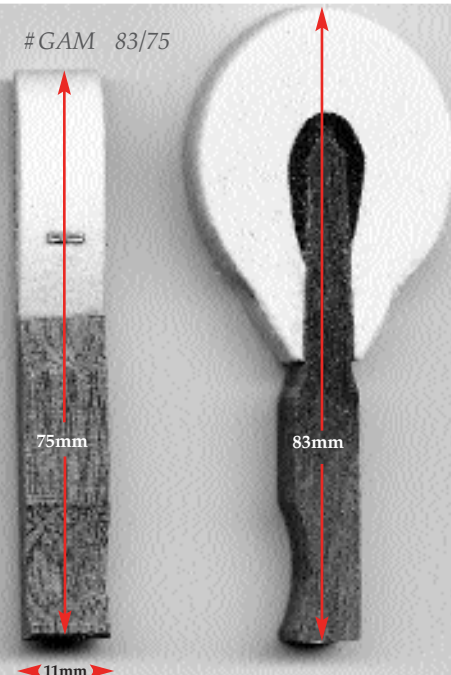
### ABEL "MEDIUM" BORE

Fits Mason & Hamlin, Baldwin, Yamaha, Kawai, and most others with "regular" bore lengths.

Allows up to 2" treble bore with 1" tail. Mahogany moulding. *Shown right, actual size.*

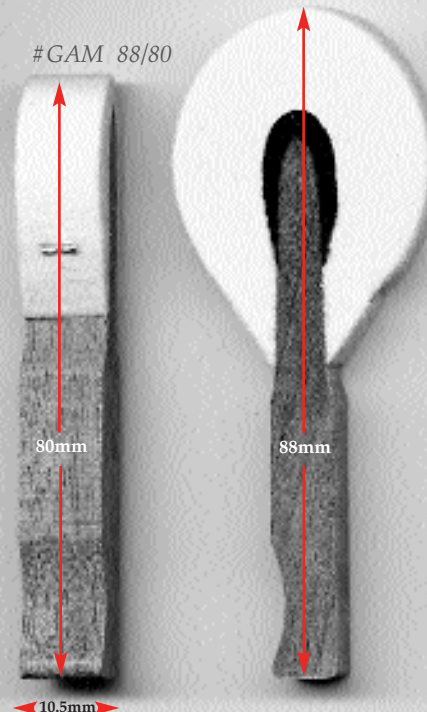
#GAM 83/75

#GAM 83/75



*All hammers shown exact size. Available bored or unbored. See page A-1 for ordering and custom boring instructions.*

#GAM 88/80



### ABEL "LONG" BORE

Fits grands with longer bore lengths. Up to 2 1/2" treble bore with 1" tail. Mahogany moulding. *Shown left, actual size.*

#GAM 88/80

### ABEL "EXTRA LONG" BORE

Uncut and uncovered 93 mm length allows for virtually any bore length. Perfect for the technician who prefers doing their own boring and tail work. Mahogany moulding. *Not pictured.*

#GAM 93/93

### ABEL HORNBEAM/REGULAR

Same as #GAM 83/75, except hornbeam moulding. *Shown right, actual size.*

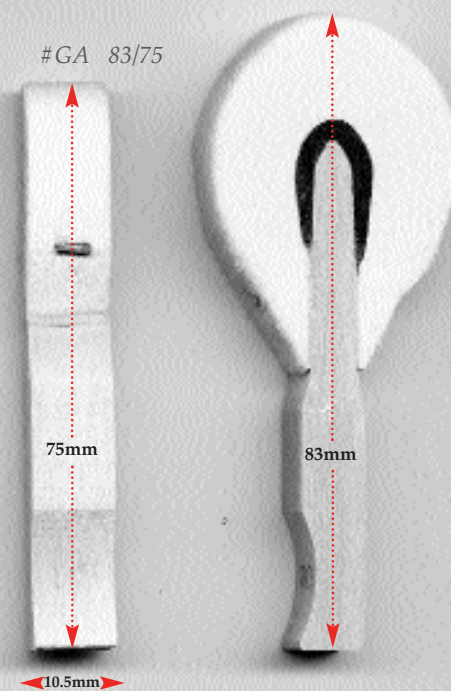
#GA 83/75

### ABEL HORNBEAM/LONG

Same as #GAM 88/80, except hornbeam moulding. *Not pictured.*

#GA 88/80

#GA 83/75

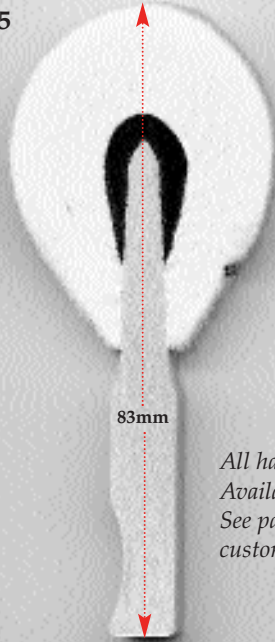
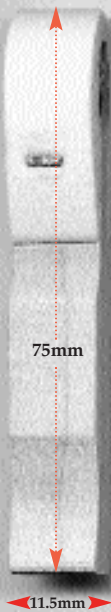


# GRAND HAMMERS

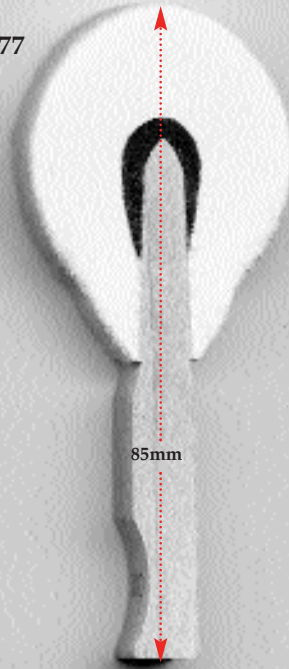
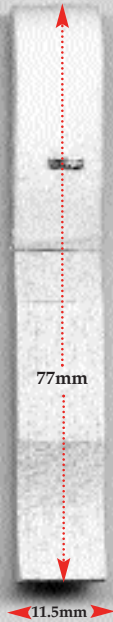
## ABEL "SELECT" SERIES

High performance hammers for the discriminating technician. Designed exclusively for Pianotek by Helmut Abel, GmbH, Germany, Abel Selects boast the ultimate in tone and power. Special manufacturing process provides tone qualities in character with the much sought after classic American tone found in older Steinway and Mason & Hamlin larger grands. *Technicians report very little voicing required, drastic improvement to overall tone production, and extremely satisfied customers.*

# GA-S5 83/75

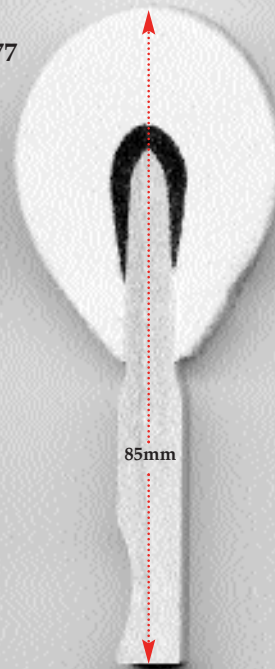
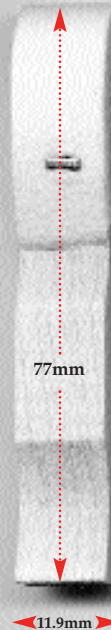


# GA-S5 85/77



All hammers shown exact size.  
Available bored or unbored.  
See page A-1 for ordering and  
custom boring instructions.

# GA-S6 85/77



### SPECIFICATIONS: ABEL SELECT

1. Rich, powerful, resilient, classic American tone quality.
1. Designed for large grands as a performance hammer for the concert stage, studio, and home environments.
2. Quarter-sawn maple mouldings from André Bolduc allows for pin-point boring accuracy.
3. Wider widths available for concert grand scales.
4. Purple underfelt.
5. Hammers stapled through #88.
6. No chemical hardeners or additives.

*NOTE: Due to felt widths and density, Abel selects may be heavier than original hammers. If matching original hammer weight without modifying original action geometry, please refer to the sample average weights listed below and compare samples before ordering.*

7. Average weight of sample unbored hammers:

#GA-S5	#GA-S6
#1 11.7 grams	#1 13.0 grams
#21 11.5 grams	#21 12.7 grams
#40 9.8 grams	#40 10.6 grams
#70 7.8 grams	#70 8.2 grams

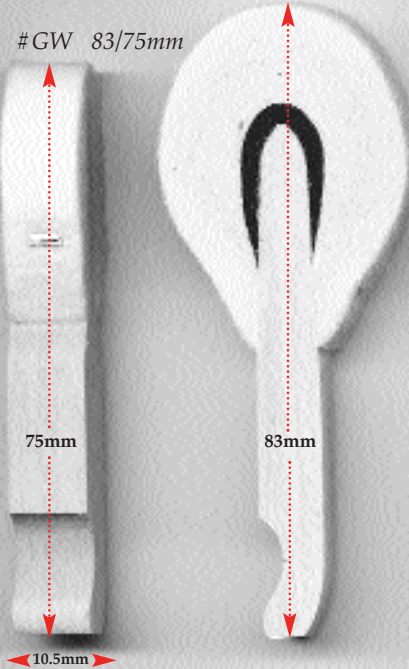
*NOTE: Weights listed above are a based on sample hammer averages. Actual weights may vary slightly ( $\pm .2$  to  $.5$  grams) from set to set.*

# GRAND HAMMERS

## IMADEGAWA GRAND HAMMERS

Manufactured by Imadegawa & Co., LTD, Japan, Imadegawa grand hammers offers solid performance and economy. Pianotek Supply Company first introduced Imadegawa with Nippon felt in 1981. For over 20 years, technicians have relied on their quality and dependability. **SPECIFICATIONS:** 15-lb. medium hardness felt, factory pre-filed, stapled up to #88, red underfelt, tails factory pre-shaped, available in hornbeam or lighter weight mahogany. Widths available in 10.5mm or 10.2mm. Available unbored or custom bored to your samples. See page A-1 for ordering and custom boring instructions.

#GW 83/75mm



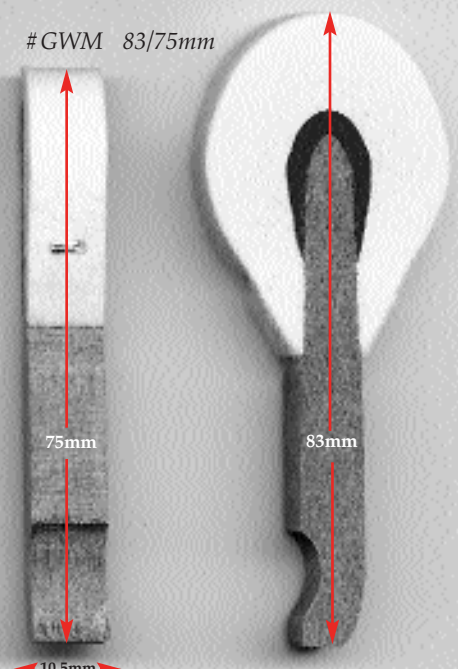
### IMADEGAWA "MEDIUM" BORE HAMMERS

Imadegawa "medium" bore fits most brands such as Mason & Hamlin, Baldwin, Yamaha, Kawai, Chickering, Aeolians, Steinway, and most others. Will fit treble bore up to 2" with 1" tail. Available in either hornbeam or lighter weight mahogany moulding. *Hornbeam shown left, mahogany shown right, actual size.*

#GW 83/75 (Hornbeam)

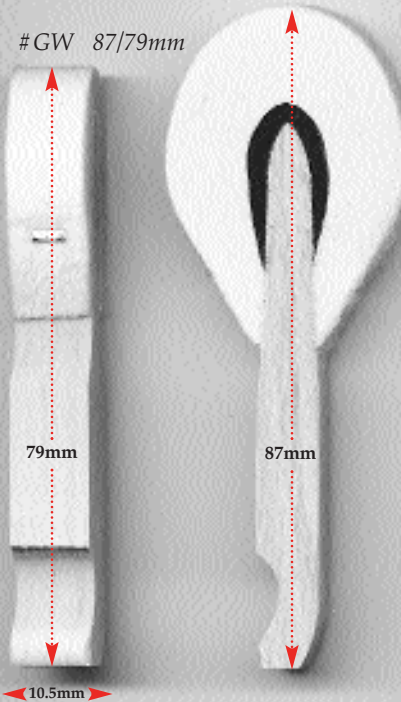
#GWM 83/75 (Mahogany)

#GWM 83/75mm



*All hammers shown exact size. Available bored or unbored. See page A-1 for ordering and custom boring instructions.*

#GW 87/79mm



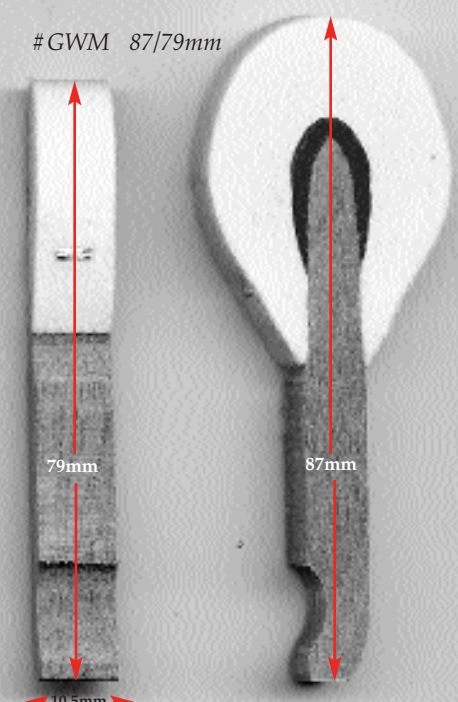
### IMADEGAWA "LONG" BORE HAMMERS

Imadegawa "long" bore hammers will accommodate treble bore lengths up to 2 1/2" with 1" tail. Also great for medium bore hammers with long tails. Available in hornbeam or lighter weight mahogany. *Hornbeam shown left, mahogany shown right, actual size.*

#GW 87/79 (Hornbeam)

#GWM 87/79 (Mahogany)

#GWM 87/79mm

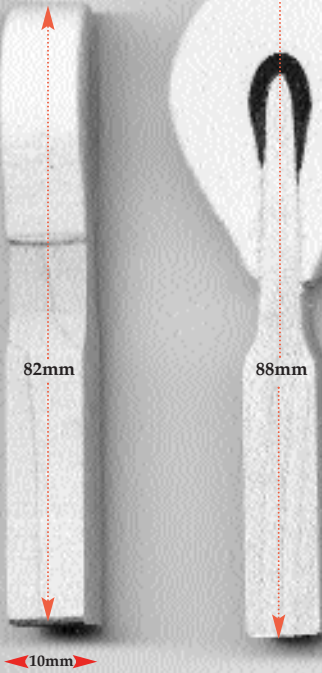


# GRAND HAMMERS

## RONSEN GRAND HAMMERS

Traditional style hammers from Ronsen Piano Hammer Co., New York. Low heat pressing produces tone qualities similar to American hammers produced in the 1920's and 1930's. **SPECIFICATIONS:** 14-lb. or 16-lb. soft (mellow) hardness, purple underfelt, stapled from #1 to mid #60's, available in maple or lighter sapele (mahogany) moulding. Ronsen hammers may require "voicing up" to achieve proper tone. Available unbored or custom bored to samples. Shown below, actual size. See page A-1 for ordering and custom boring instructions.

#GR-14 Maple

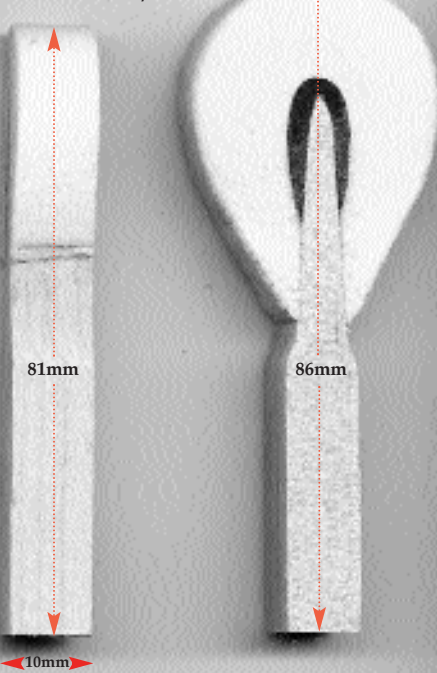


### RONSEN MAPLE MOULDING

Ronsen hammers are factory uncut and uncoved. Cutting and coving available. See page A-1 for custom services. Overall lengths may vary slightly from photos shown. Maple mouldings shown both left and right, actual size.

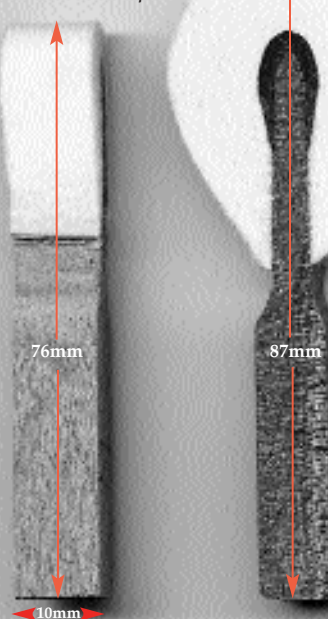
# GR-14 Shown left.  
# GR-16 Shown right.

#GR-16 Maple



All hammers shown exact size.  
Available bored or unbored.  
See page A-1 for ordering and  
custom boring instructions.

#GR-14S Sapele



### RONSEN SAPELE MOULDING

Ronsen hammers are factory uncut and uncoved. Cutting and coving available. See page A-1 for custom services. Overall lengths may vary slightly from photos shown. Sapele mouldings shown both left and right, actual size.

# GR-14S Shown left.  
# GR-16S Shown right.

#GR-16S Sapele

